



**Professional
Testing
Systems**

Urine 10 Chem Strip Test

The Urine 10 chem strips provide a convenient system to perform ten different CLIA waived tests quickly with a single urine strip.



FDA-cleared



CLIA-waived



CE-marked



- 1. Leukocytes** - Increased urinary leukocytes indicate an increase of white blood cells. An increased white blood cell count indicates the presence of inflammation.
- 2. Nitrites** - The presence of urinary nitrites indicates bacterial contamination, or infection, in the bladder. Nitrites are not normally present in the urine.
- 3. Urobilinogen** - Urinary urobilinogen is used to screen for hemolytic anemia or as an indicator of slight to moderate liver damage.
- 4. Protein** - Protein is not normally excreted in urine. The presence of significant amounts of protein requires further studies to determine decreased kidney function and/or kidney lesions.
- 5. Urinary pH** - Urinary pH gives an indication of the body's acid-base balance. Urinary pH is affected by certain disease states and dietary intake.
- 6. Urinary Blood** - Urinary pH gives an indication of the body's acid-base balance. Urinary pH is affected by certain disease states and dietary intake.
- 7. Specific Gravity** - Specific gravity is a measurement of the kidneys' ability to concentrate and excrete urine. Specific gravity of more than 1.030 is indicative of several possible conditions.
- 8. Ketones** - This test will look for the presence of ketosis. Ketosis has a strong acidifying effect on the body. The appearance of both ketones and glucose is highly indicative of poor diet.
- 9. Bilirubin** - The presence of bilirubin on the Chem Strip indicates inflammation of the liver and biliary stasis or the presence of gallstones impeding the flow of bile into the small intestine.
- 10. Glucose** - A double sequential enzymatic reaction, involving glucose oxidase and peroxidase in the presence of an indicator is responsible for the color change..



Professional Testing Systems

For more information please contact us at:

800-890-4547 or visit us at: www.ProfessionalTestingSystems.com

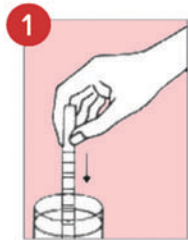




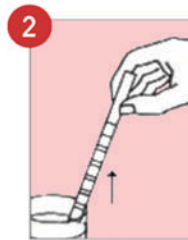
Professional Testing Systems

Urine 10 Chem Strip Test Procedure and Test Result Recommendations

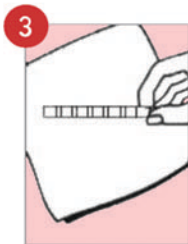
Chem 10 Strip Test Procedure



1 Remove only enough strips from the bottle for immediate use and replace cap tightly.



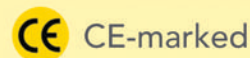
2 Completely immerse reagent areas of strip in fresh, well-mixed urine. Remove strip immediately to avoid dissolving out the reagent areas.



3 While removing, touch the side of the strip against the rim of the urine container to remove excess urine. Blot lengthwise edge of strip on absorbent paper towel to further remove excess urine and avoid contamination from adjacent reagent pads.



4 Compare each reagent area to its corresponding color blocks on the color chart and read at the times specified. Proper read time is critical for optimal results. Obtain results by direct color chart comparison.



Chem 10 Strip Test Result Recommendations

Leukocytes	Negative	2 Digestion w/meals, 1 Opti-Immune/Defense w/each meal, Acute if injury present.
Nitrite	Negative	2 Digestion w/meals, Dropper OxyPure under tongue 3 x per day, 1 Opti-Immune/Defense with each meal.
Urobilinogen	Negative	Soft Cleanse pak 2 x per day.
Protein	Negative	1 Liver/Kidney morning and night, 1 Acute w/meals, 3 Muscle Rx morning and night.
pH	5 - 6	2 servings Fruit & Veggie Plus daily, Dropper of Oxy Pure under tongue 3 x per day.
Blood	Neg. 5-10 Ery/mL	Menstration? Further examination needed. 1 Opti-Cleanse & Repair morning and night.
Specific Gravity	1.001 - 1.035	1 Liver/Kidney morning and night, 2 Fat/Sugar/Trim 3 x per day w/meals.
Ketones	Negative	1 - 2 servings of Complete Nutrition Plus, 1 - 2 Fat/Sugar/Trim w/meals.
Bilirubin	Negative	Soft Cleanse pak 2 x day.
Glucose	Negative	2 Fat/Sugar/Trim 3 x per day w/meals, F & V+ 1 - 2 x per day (FITNESS and Eating plan).



Professional Testing Systems

For more information please contact us at:

800-890-4547 or visit us at: www.ProfessionalTestingSystems.com

